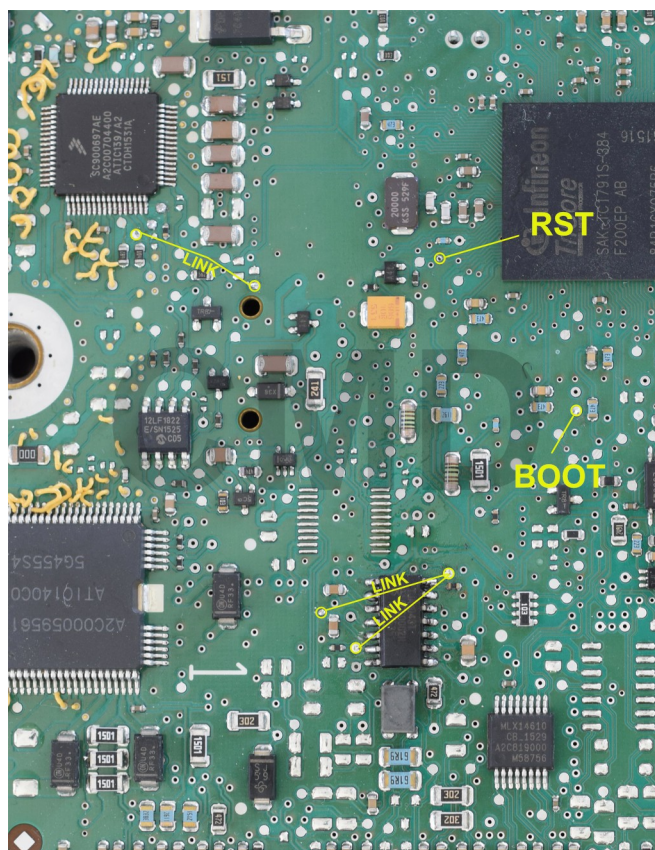
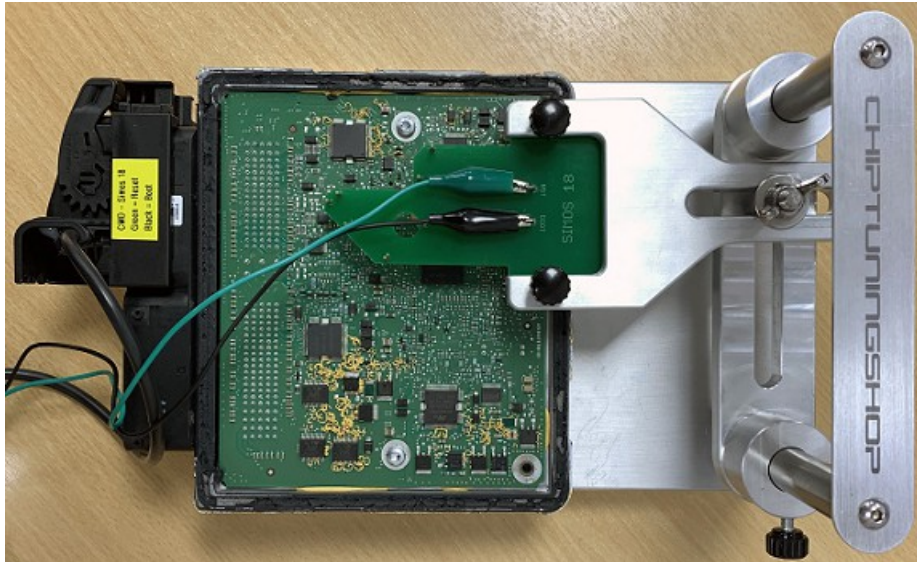


VAG Simos 18 Cable + Probe Set Connections



The pads marked above to make contact with the probe.

See page 2 for BOOT/RST info!

VAG Simos 18 Cable + Probe Set Connections



Probe to tool connection info:

Probe: CMDFlash (HD15-CMD Cable):
BOOT BOOT
RST RST

Probe: bFlash (HD15-TPSG Cable):
BOOT BOOT
RST RST

Probe: K-TAG (HD15-KT Cable):
BOOT BOOT
RST CNF

Probe: FLEX (HD15-FLX Cable):
BOOT B9
RST B8

Technical alterations reserved!

Copyright by www.chiptuningshop.com

This product should be operated by competent personnel only. Chiptuningshop Ltd do not accept any responsibility for damages, direct or consequential caused by improper handling.