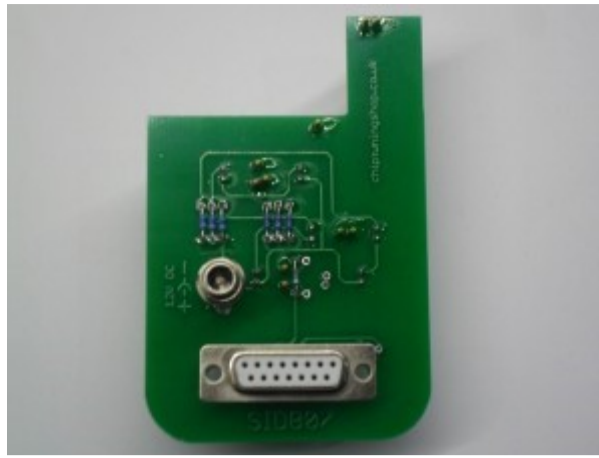


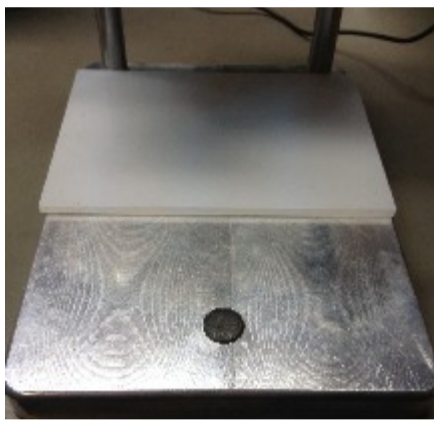
Manual for using SID807 TC1797 ECU probe with CMDFlash.



1. Description: This probe can be used for programming Continental SID807 TC1797 ECUs. It fits in most BDM positioning frames and is fitted with LEDs for accurate alignment on the ECU. Included with the probe is a 5mm perspex sheet.

There is no need for soldering to the ECU at all!

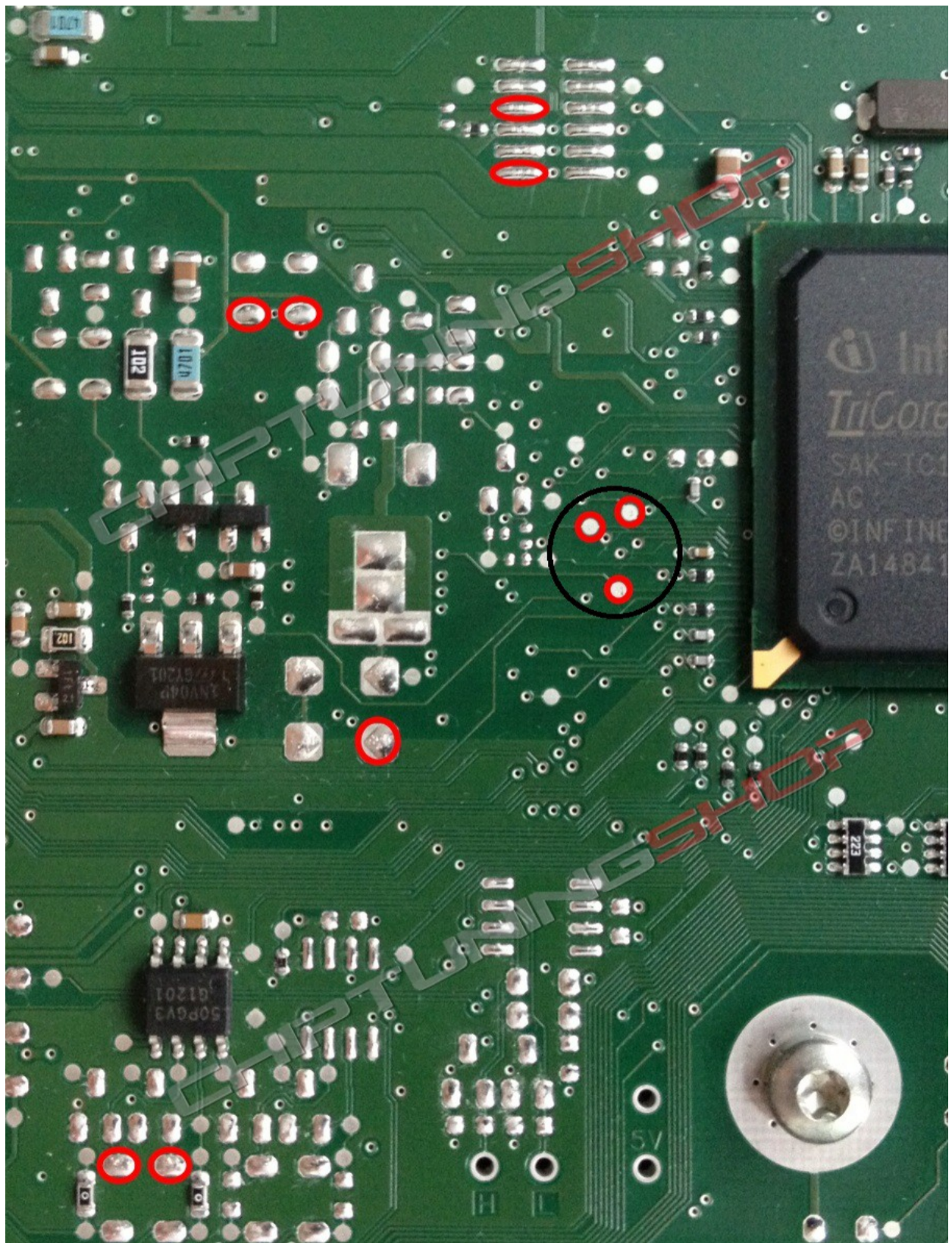
2. Handling and adjustment: Place the perspex sheet on the end of the BDM frame as pictured below. Place the probe into the BDM frame retaining bracket and tighten the screws. Attach the CMDFlash tool to the Tricore boot interface and power supply. Then connect the boot interface to the serial connector on the probe.



If lighting is required you can connect a 12V power supply to the jack on the probe (this only powers the LED's and not the ECU). It is possible to use the CMD power supply to power the LED's temporarily whilst aligning, once aligned you can return the power supply back into the CMD interface.

Move the retainer carefully towards the ECU and ensure that the 3 pins in the centre (which are circled in the diagram) are in their designated position. These 3 pins hit the ECU first. Then adjust the other pins and push the retainer 3mm towards the ECU to get a good connection and lock the retainer. A detailed diagram showing the location of the connections can be found below.

3. Programming the ECU: You can now proceed with programming.



The pads marked in red have to make contact with the probe. The probe hits the 3 circled pins first. If they are in their designated position, then you can move the adaptor towards the ECU and connect to the remaining pads.

Technical alterations reserved!

Copyright by www.chiptuningshop.co.uk

This product should be operated by competent personnel only. Chiptuningshop Ltd do not accept any responsibility for damages, direct or consequential caused by improper handling.