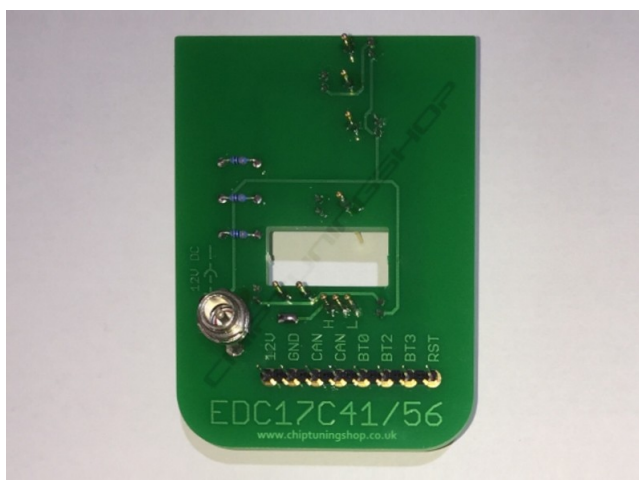


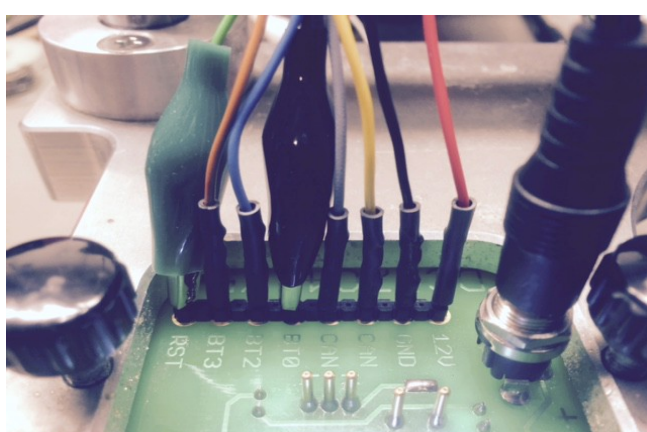
Manual for using BMW EDC17C41/56 probe with CMDFlash.



1. Description: This probe can be used for programming BMW F-Series EDC17C41 and EDC17C56 ECUs with CMDFlash. It fits in most BDM positioning frames and is fitted with LEDs for accurate alignment on the ECU.
Please note, the CMD BMW Fxx tool set required to read the password on this ECU.

There is no need for soldering to the ECU at all!

2. Handling and adjustment: Place the probe into the BDM frame retaining bracket and tighten the screws. Attach the CMDFlash tool to the Tricore boot interface and a power supply. Then connect the universal cable supplied with the CMD BMW Fxx tool set to the Tricore interface, and attach the loose cables to the probe as shown in the picture below (12V, GND, CANH, CANL, BT0, BT2, BT3, RST)



If lighting is required you can connect a 12V power supply to the jack on the probe (this only powers the LEDs and not the ECU). It is possible to use the CMD power supply to power the LEDs temporarily whilst aligning, once aligned you can return the power supply back into the CMD interface.

Move the retainer carefully towards the ECU and ensure that all pins are in their designated position. A detailed diagram showing the location of the connections can be found at the end of this manual.

3. Read password: When connections have been made, the password can be retrieved.

4. Programming the ECU: Once the password has been read you can proceed with programming.



The pads marked in red have to make contact with the probe.
The pins on the probe are fitted at 2 different heights. The connections marked (1) make contact first.

Technical alterations reserved!

Copyright by www.chiptuningshop.co.uk

This product should be operated by competent personnel only. Chiptuningshop Ltd do not accept any responsibility for damages, direct or consequential caused by improper handling.